



ELEPHANT BAGS

LBG dry powder fireside additives are supplied in reusable environmentally friendly 500kg/(1100lbs) elephant bags, or 25kg/(55lbs) pails. The elephant bags are designed for use with an automated feeder. The pails are for manual powder injection.



DRY POWDER FEEDER

LBG dry powder fireside additives are injected by air into the CRU above the liquor combustion zone by an automated feed system. This process ensures accurate and timely dosage of additive.

LBG Industries Inc., formulates, blends and markets unique combustion enhancement chemicals and other products used in boilers operated by Pulp & Paper, Power Generation and Co-Generation Industries.

The goal of **LBG** is to provide our customers with superior products, supported by efficient and effective on-site professional technical service.

LBG has the ability to deliver successful chemical solutions to fireside problems in all types of boilers.

LBG Industries Inc., with over thirty-five years of continuous experience, is well qualified to offer cost effective chemical programs.



LBG 
INDUSTRIES INC.

LBG Industries Inc.
Mansonville, Quebec, Canada.
Phone: 450-292-3016
Fax: 450-292-4411
E-Mail: info@lbgindustries.ca
Or visit our web site
<http://www.lbgindustries.ca>

If your
EFFICIENCY
or **CAPACITY**
is **LIMITED** by
BOILER
FOULING
YOU NEED

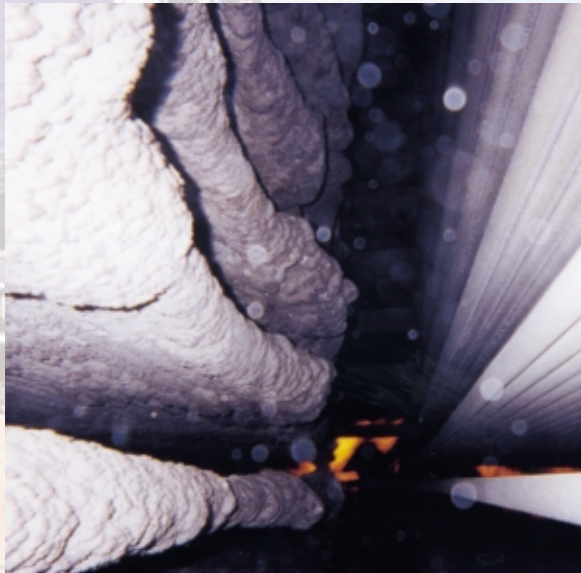
LBG 
INDUSTRIES INC.

CHEMICAL RECOVERY BOILERS

LBG Industries Inc., has developed a proven, cost effective fireside additive program for kraft recovery boilers, which improves efficiency by reducing particle build-up on tubes. Many prominent mills in Canada have been using the **LBG** dry powder fireside additive program continuously for several years.

BENEFITS RECEIVED FROM **LBG** FIRESIDE ADDITIVES:

- Reduce fouling and improve boiler efficiency.
- Make deposits more friable and thus easier to remove by sootblowing.
- Friable deposits require less time for water washing.
- Reduce unscheduled outages due to plugging.
- Extend run time between water washes.
- Increase throughput by reducing fouling.
- Eliminate large deposit formations which may cause damage to tubes and sootblowers when dislodged.



BIO-MASS FUEL BOILERS HAZARDOUS WASTE CHEMICAL INCINERATORS

Boilers fired with bio-mass fuels experience problems with clinker formation and fireside tube deposits. Waste wood or hog fuel may also produce emissions from the stack that are not acceptable under current legislated standards. Environmental concerns ensure that future legislation will be even more restrictive

LBG Industries Inc. has chemical solutions that will reduce fouling and improve boiler efficiency in all types of boilers. **LBG** combustion enhancing chemical additives, properly used, can be a cost effective way to reduce purchased energy costs and maintain operations within environmental restrictions.

Hazardous waste chemical incinerators have unique problems with deposits and emissions. If a chemical solution is the answer, then **LBG** has the technical expertise and experience to provide the proper chemical program.



OIL FIRED BOILERS

LBG Industries Inc., provides practical chemical solutions for problems related to the storage, handling and burning of residual fuel oil.

LBG CHEMICAL PROGRAMS ARE DESIGNED TO:

- Reduce ash deposition in the furnace area.
- Reduce superheater slagging/corrosion.
- Reduce convection fouling.
- Eliminate/reduce cold end corrosion.
- Eliminate acid smut.
- Increase superheater steam temperature.
- Avoid sludge and asphaltene accumulation in storage tanks.
- Maintain permissible stack emission levels.
- Convert tank sludge into burnable fuel.
- Maintain water in emulsion or break out as desired.
- Obtain better fuel atomization and improve combustion.

